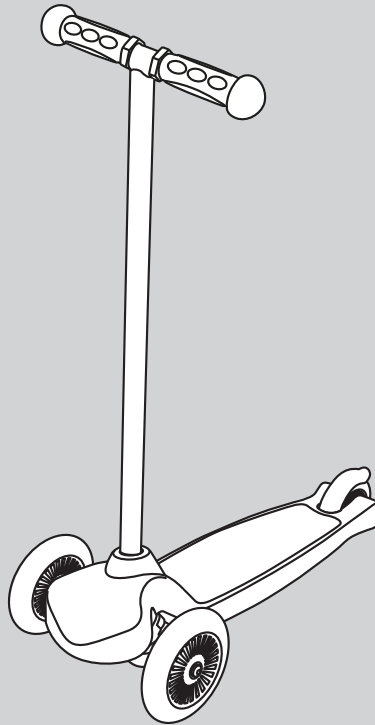


Push & Go Scooter

Instruction manual



**IMPORTANT - RETAIN FOR FUTURE
REFERENCE. READ CAREFULLY.**

Warning: A child's safety is your responsibility.

1. Contents

- 1. Contents01
- 2. Welcome01
- 3. Push & Go Scooter - Safety Instructions02
- 4. Push & Go Scooter - Assembly03
- 5. Push & Go Scooter - How To Play04

2 .Welcome

Thank you for purchasing the Puggle Push & Go Scooter.

Please read the instructions and warnings carefully before use to ensure safe and satisfactory operation of your Puggle Push & Go Scooter.

If you have a query with this product or require replacement parts, please contact Online4baby online at online4baby.com/contact-us.

3. Push & Go Scooter - Safety Instructions

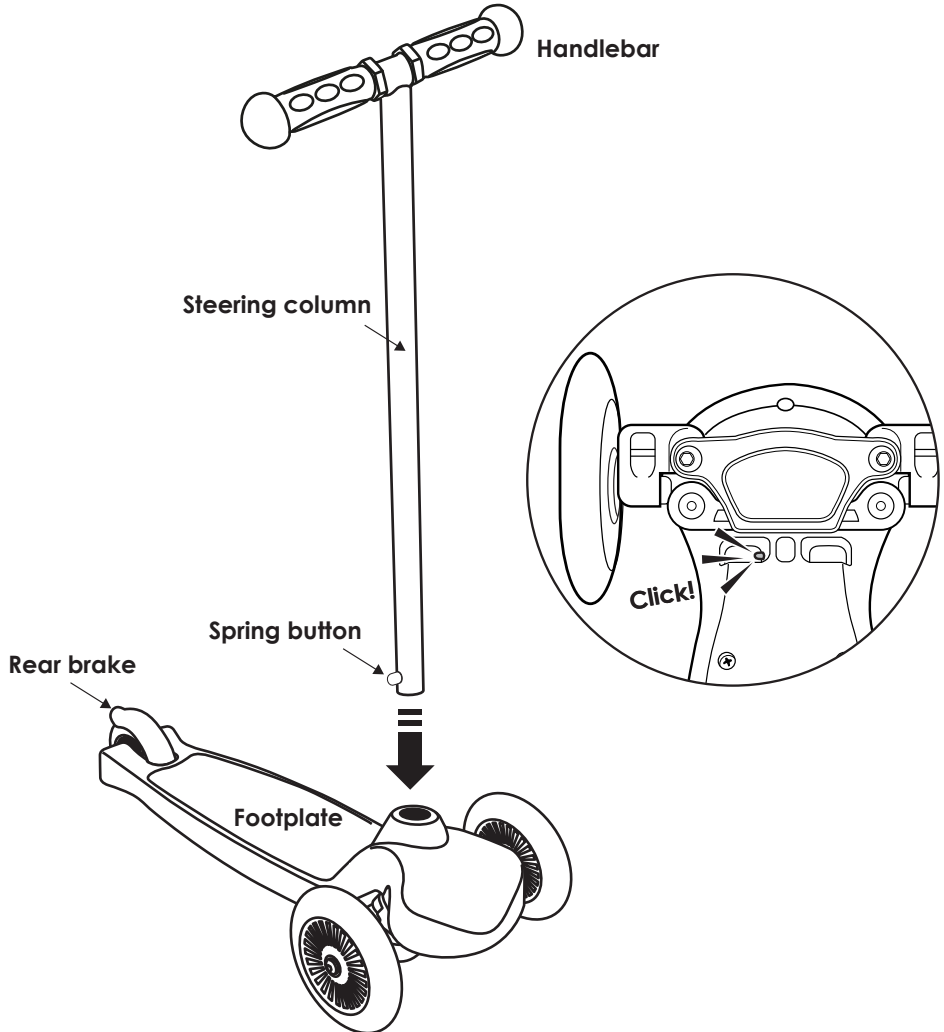
IMPORTANT! PLEASE READ THE FOLLOWING INSTRUCTIONS CAREFULLY BEFORE USING THE PRODUCT.

WARNINGS:

- Adult assembly is required.
- Adult supervision is required.
- Warning! Protective equipment should be worn. Not to be used in traffic. 20kg max. Children should wear approved protective equipment e.g. helmet, gloves, knee pads and elbow pads, and correct fitting is required.
- Do not allow a child to ride without shoes.
- Do not allow a child to ride the product at dusk, at night or at times of limited visibility.
- Do not allow a child to ride on roadways, public highways or alleys.
- Do not allow a child to ride on steeply sloped areas.
- Do not allow a child to ride near steps.
- Do not allow a child to ride near swimming pools, or other bodies of water.
- For use on smooth, paved surfaces only.
- Never ride with more than one person. Maximum weight is 20kgs.
- Replace worn or broken parts immediately.
- Check the product before each ride for loose components and re-tighten where necessary.
- Be sure the rider keeps both hands on the handlebar for proper control.
- Children should be reminded that the toy should be used with caution, since it requires skill, so as to avoid falls or collisions causing injury to the user and third parties. They should also be reminded of the dangers of using the scooter in public highways.
- To ensure that product is periodically checked to ensure that moving parts are lubricated and not working loose, tighten where applicable.
- Only use parts supplied by the manufacturer and do not attempt to modify in anyway.
- Wipe clean with a damp cloth and dry thoroughly.
- Store in a cool, dry place and away from sources of heat or high humidity.

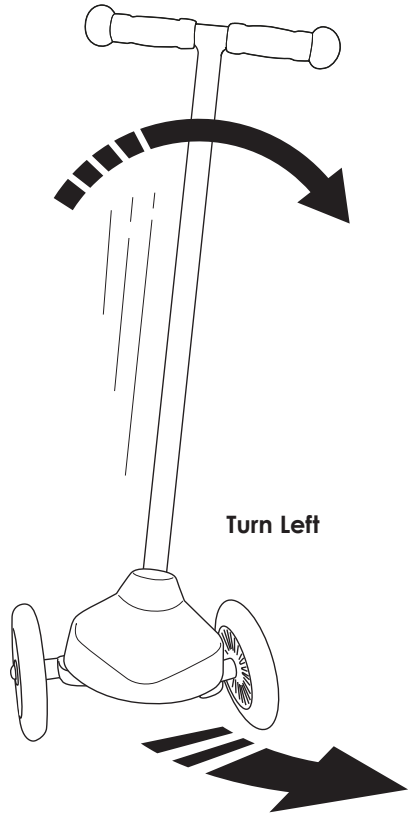
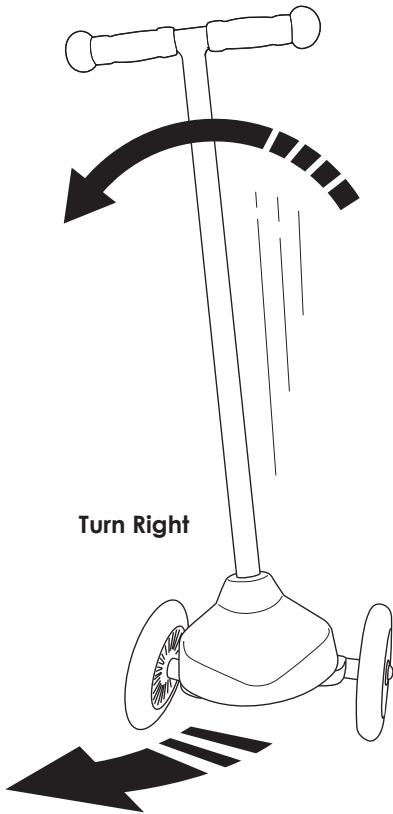
4. Push & Go Scooter - Assembly

- An adult must assemble this product.
- Keep small loose parts and plastic bags out of the reach of children.
- Press the spring button on bottom of handle bar.
- Push the steering column into the footplate.
- Make sure the spring button pops out to secure in position properly as indicated.



5. Push & Go Scooter - How To Play

- Hold both handgrips firmly.
- Put one foot towards the front of the deck.
- With the other foot, push off the ground to propel the scooter forward.
- Both feet can step on the deck when desired speed has been reached.
- To stop, step on the brake with the rear foot.





If you have any questions or concerns regarding this product,
do not hesitate to contact our expert team online
via online4baby.com/contact-us

Feeling social?  
online4baby.com

Imported by Online4baby Ltd,
Meadowbank, Tweedale Way, Oldham, OL9 8EH, UK